

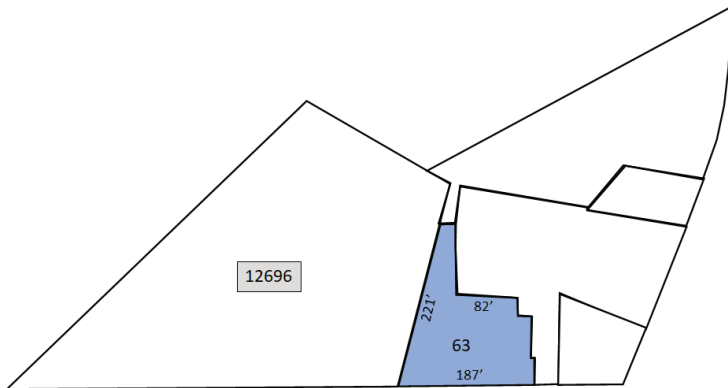
130-75 Farmers Boulevard, Queens, NY 11434



Executive Summary

Bridge Property Advisors has been exclusively retained to market for lease 130-75 Farmers Boulevard in Springfield Gardens, Queens. The site consists of 22,738 square feet of M1-1 zoned land with 187' of frontage in Farmers Boulevard. The site is paved and fenced for quick adaptive use.

Tax Map



Site Information

Location:	Between Merrick Blvd & 122nd Ave
Block-Lot:	12696-63
Zoning:	M1-1
Assesment:	\$152,100
RE Taxes (20/21)	\$16,266
Lot Dimensions:	197' x 221' (Irreg.)
Lot Sqaure Footage:	22,738

Ideal Uses

- Parking
- Containers
- Scaffolding
- Heavy Equipment
- Automotive
- Construction
- Fabrication

Asking Rent: \$300,000 NNN

For more information, please contact:

Brian T. Leary
Managing Director
718.906.6660
bleary@bridgepany.com

Jidan Kim
Director
718.906.6662
jkim@bridgepany.com

James O'Neill
Director
718.906.6661
joneill@bridgepany.com

Bridge Property Advisors | 1201 Broadway, Suite 401, New York, NY 10001 | 646.839.2277 | bridgepropertyadvisors.com

The information herein has been obtained from sources believed to be reliable. No warranty, guarantee or representation is made to the accuracy or completeness of the information disclosed. Any projections, opinions or estimates are for illustrative purposes only and do not represent the current or future performance of the property. You and your representative should independently investigate and verify any and all information contained in this document and determine the suitability of the property for your needs. Price, availability and any other listing condition is subject to change without notice. ©2019 Bridge Property Advisors NY LLC. All rights reserved.

